



## *Vivotek* *IP Surveillance System*

# Network Camera IP2112/2122

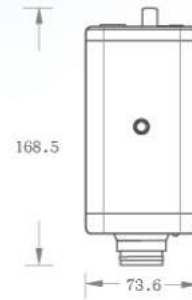
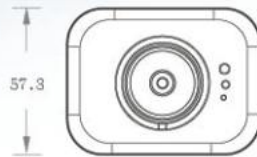
The network camera IP2112/22 combines powerful video server and high quality image sensor for easy migration to digital video surveillance and monitoring. Real-time and high-quality video is digitized over Ethernet and enjoyed at your finger tip without any compromise. With external device support and motion detection, Vivotek network cameras can easily build the optimal security applications.

### Features

- Easy web access via popular browsers
- Familiar wizard assistance
- Built-in crystal clear CCD
- Real-time performance with options of size and quality
- Built-in motion detection
- Extension for sensor and alarm
- Development kit for system integrators

# Technical Specifications

## IP2112/2122



### Model

- IP2112 NTSC CCD
- IP2122 PAL CCD

### System

- CPU: Trimedia PNX1300
- RAM: 16MB SDRAM
- ROM: 2MB FLASH ROM

### Networking

- Protocol  
TCP/IP, HTTP, SMTP, FTP, Telnet, NTP, DNS and DHCP
- Ethernet  
10 baseT or 100 baseT Fast Ethernet auto negotiation

### Video

- Algorithm supported  
MJPEG
- Features  
Adjustable image size and quality  
B/W or color control  
Time stamp and text overlay
- Resolution  
**NTSC**  
Up to 30 frames at 176x112  
Up to 30 frames at 352x240  
Up to 9 frames at 704x480  
**PAL**  
Up to 25 frames at 176x144  
Up to 25 frames at 352x288  
Up to 8 frames at 704x576

### Camera Specification

- 1/4 inch color CCD image sensor
- 1 Lux / F2.0
- AGC, AWB, AES
- IP2112  
Resolution: 512(H)x492(V)  
Electronic shutter: 1/60~1/100,000sec.
- IP2122  
Resolution: 512(H)x582(V)  
Electronic shutter: 1/50~1/100,000sec.

### Lens

- Standard CS-mount type, 6.0mm, F2.0

### General I/O

- 1 sensor input max. 12VDC 50mA
- 1 relay output max. 24VDC 1A / 125VAC 0.5A

### LED Indicator

- Dual color system status indicator

### Dimension

- Length: 168.5mm
- Width: 73.6mm
- Height: 57.3mm

### Weight

- NET: 380g

### Power

- Consumption: near 5.4W
- Input: 100-240VAC, 50/60Hz, 0.4A
- Output: 12VDC, 1.5A

### Operating Environment

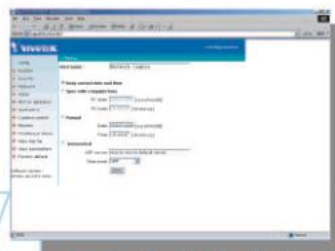
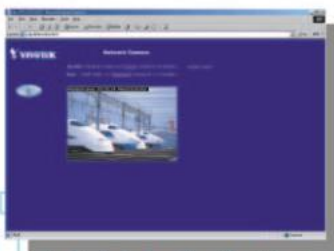
- Temperature: 0~50°C(32~122°F)
- Humidity: 95% RH

### EMI & Safety

- CE, FCC, BSMI

### Viewing System Requirement

- Internet Explorer 4.x or above;  
Netscape Navigator 4.x or above



All specifications are subject to change without notice.  
All other trademarks are owned by their respective companies.



**VIVOTEK INC.**

6F, No. 192, Lien-Cheng Rd.,  
Chung-Ho, Taipei County, Taiwan  
Tel: +886 2 22404099  
E-mail: sales@vivotek.com  
Web: www.vivotek.com

